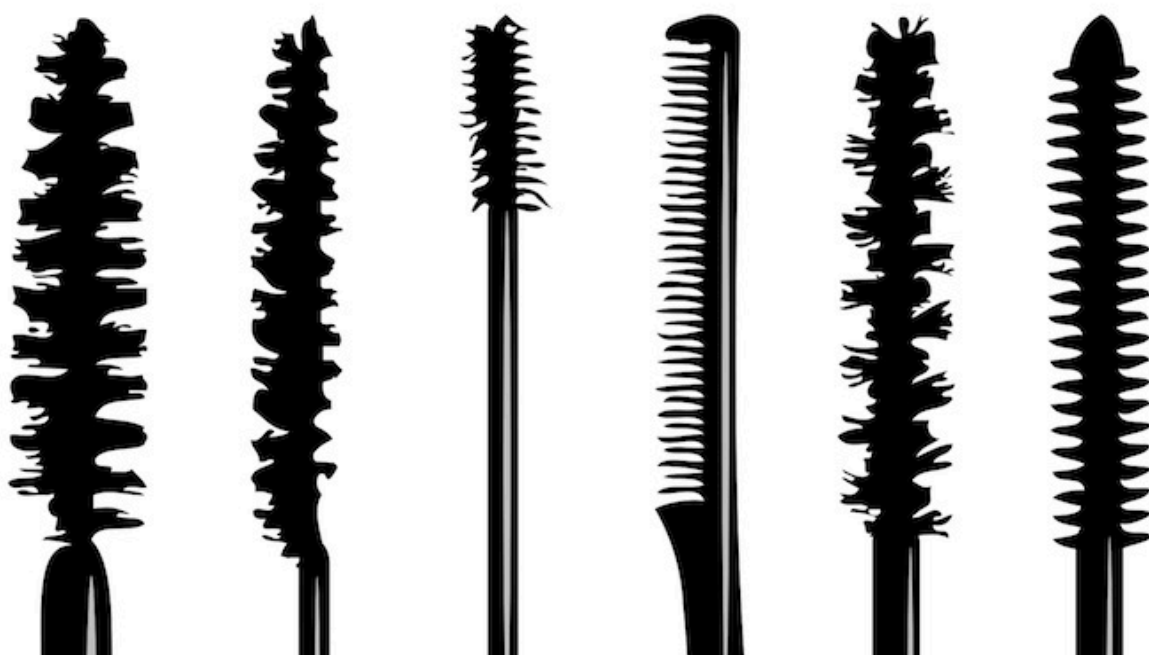
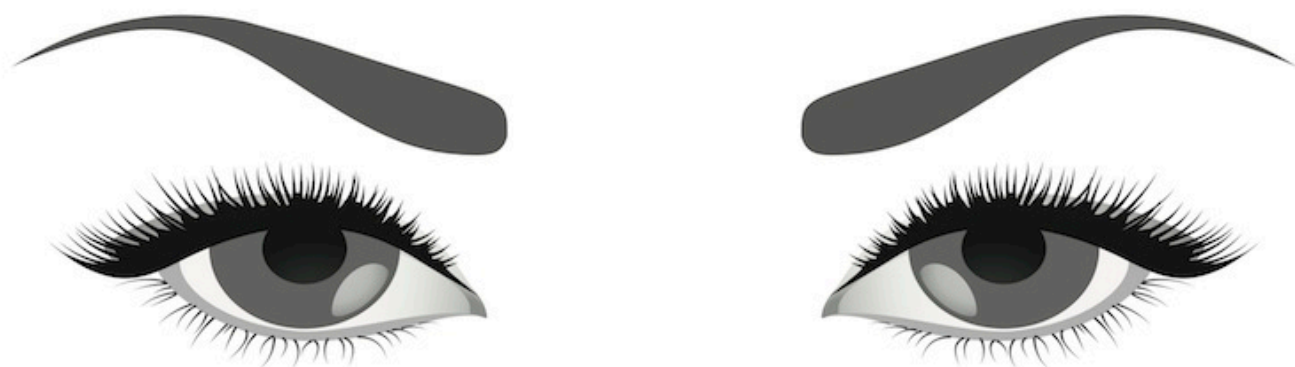


Top 5 Winner Mascara Tips



No eyes are complete without a frame of lashes curled and defined lashes to flutter. For a semi-permanent solution ideal for vacation consider having your lashes color, but for every day there are mascaras to color, thicken, volumize, lengthen, curl, or condition. Waterproof formulas withstand rain, tears, and swimming-they can be a godsend for wearers of

contact lenses, . Clear mascara gives a dewy look to natural lashes and can also be used to hold brows in shape.



Different Mascara Wands





TIP: I only use waterproof mascara in a special situation I don't regularly do, because it tends to dry the lashes, it coats them and doesn't let them breathe, aside it is hard to remove and promotes rubbing the delicate skin of the eyes and under the eyes, and irritates the skin by doing that, is best to give a place for that kind of mascara. Color: Black mascara defines the eyes like nothing else and works with almost any look, but electric blues and deep purples can also be stunning, so don't be afraid to experiment. Dark brown mascara is generally softer and more flattering for mature faces.

Application: Whatever formula you choose, here is a foolproof guide to applying mascara:

1. Make sure the wand is not overloaded so that the product is less likely to come into contact with the skin. Look down and stroke the wand over the top of the upper lashes from roots to tips. Move along from one corner of the eye to the other until every lash is coated.
2. With the eyes wide open, stroke the wand up the upper

lashes from underneath, starting at the roots and sweeping up to the tips. Move along as before from one corner to the other until every lash is coated. Repeat, but this time move the wand up the lashes in a zigzag motion to coat the sides of each lash.

3. To add more volume to the roots of the upper lashes, hold the wand vertically and push it directly up into the roots, working your way along from corner to corner.

4. To coat the lower lashes, hold the wand vertically and sweep it from side to side over the lashes, being careful not to let the wand touch your face.

TIP: I like to use an eye liner brush to coat the roots, that way I prevent my self from touching the skin and at the same time I clean any eye shadow that got in the lashes which will show the mascara as fake and not so natural.

TIP: You can purchase or make your own Mascara shield, it will help you prevent getting it on the skin.

TIP: I personally don't use mascara in the lower lashes on every person, only on certain eye shapes, it can have an effect of droopy eye.

For more information watch the videos below:

**The Amazing Mascara Trick You Need To Try
By Beauty and the Boutique**

THE NEW WAY TO APPLY MASCARA

By gossmakeupartist

**Adele Doll Lashes Makeup Tutorial Video
by Robert Jones**

**How to Curl Your Eyelashes: Makeup
Tutorial Video by Robert Jones**